
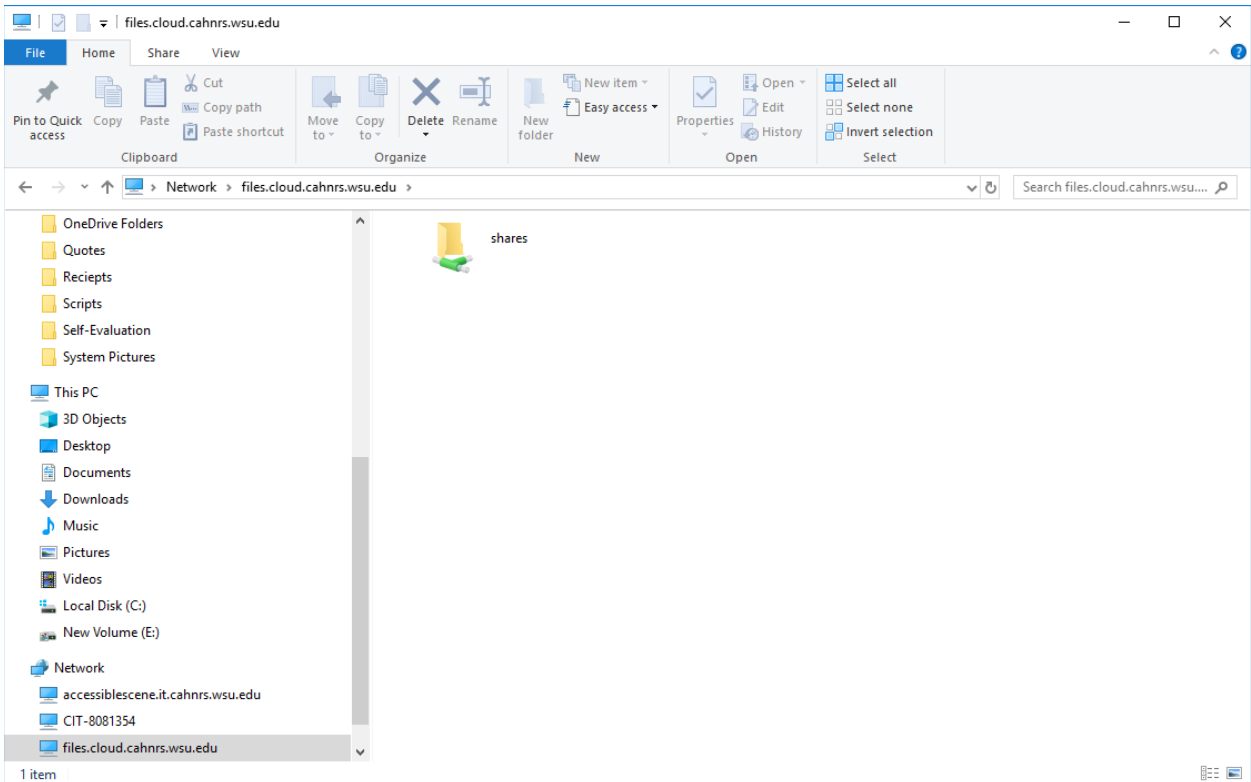



Accessing a Network Drive

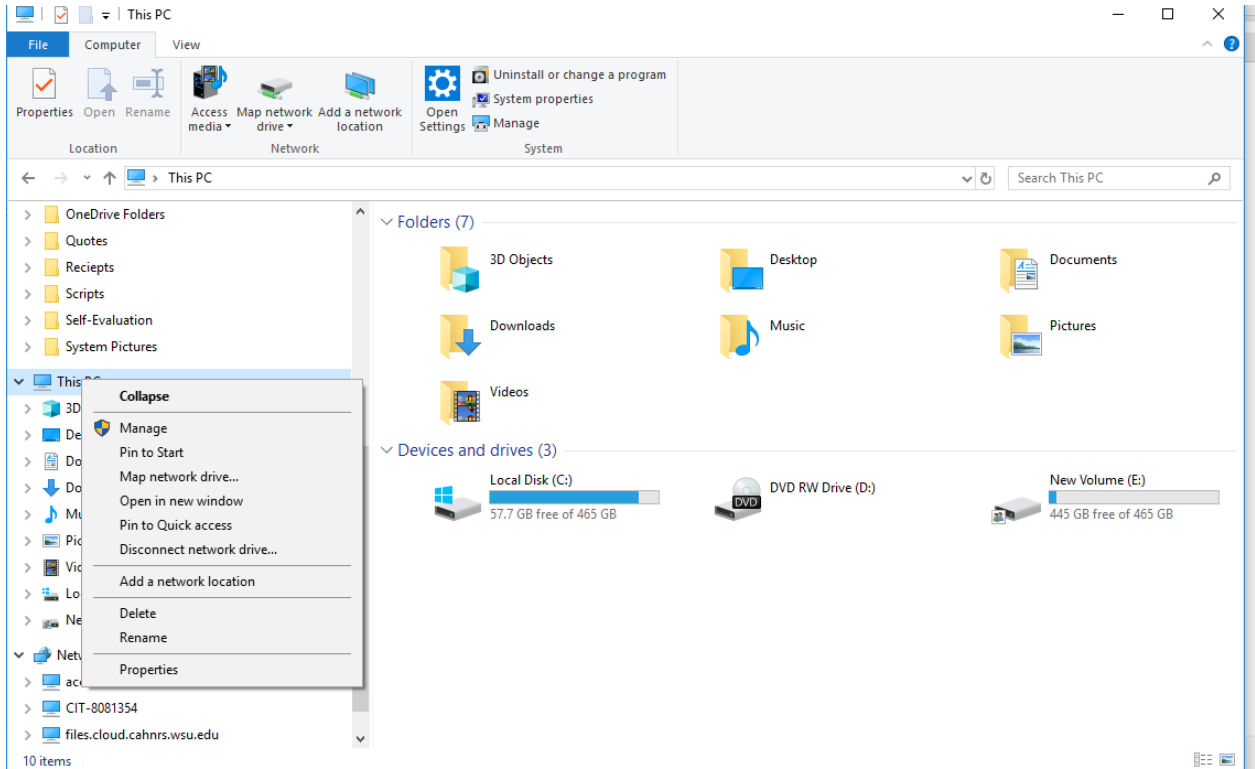
1. Open the File Explorer Application by clicking on the icon 
2. In File Explorer, click the “go to” bar at the top and enter the following:
[\\files.cloud.cahnrs.wsu.edu](https://files.cloud.cahnrs.wsu.edu)
3. Then press “ENTER”




4. Double-click the folder “Shares”
5. Now you are in the CAHNRS Cloud. Scroll down and find your department’s folder.

Mapping a Network Drive

1. Open the File Explorer Application by clicking on the  icon
2. In File Explorer, right-click on “This PC” and select “Map a network drive”



3. A new window will pop-up, please leave the default settings the same and input [\\files.cloud.cahnrs.wsu.edu\shares](https://files.cloud.cahnrs.wsu.edu/shares) in the address bar and click “Browse”

←  Map Network Drive ×

What network folder would you like to map?

Specify the drive letter for the connection and the folder that you want to connect to:

Drive:

Folder:

Example: \\server\share

Reconnect at sign-in

Connect using different credentials

[Connect to a Web site that you can use to store your documents and pictures.](#)

