

## Installing QWS3270Secure Program.

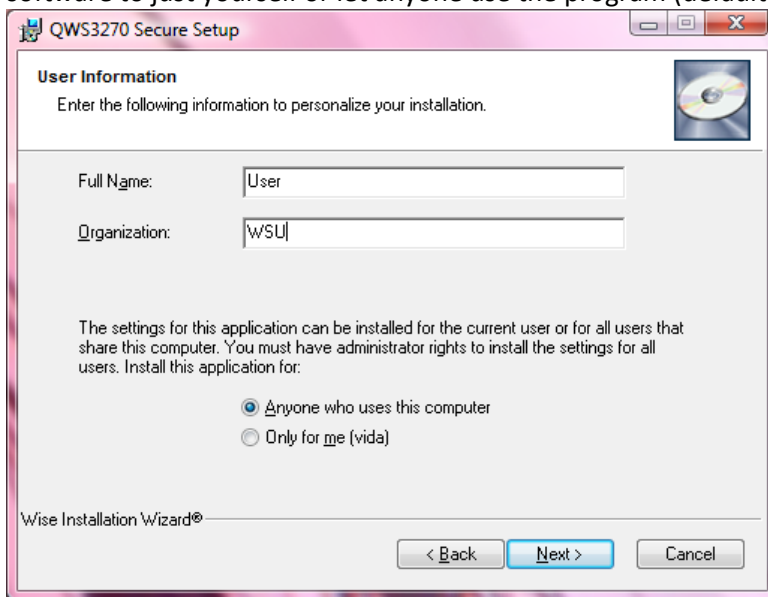
Double Click on the qws3270secure file that has been downloaded or provided on a CD.

The Installation Program will begin running.

Click “Next”

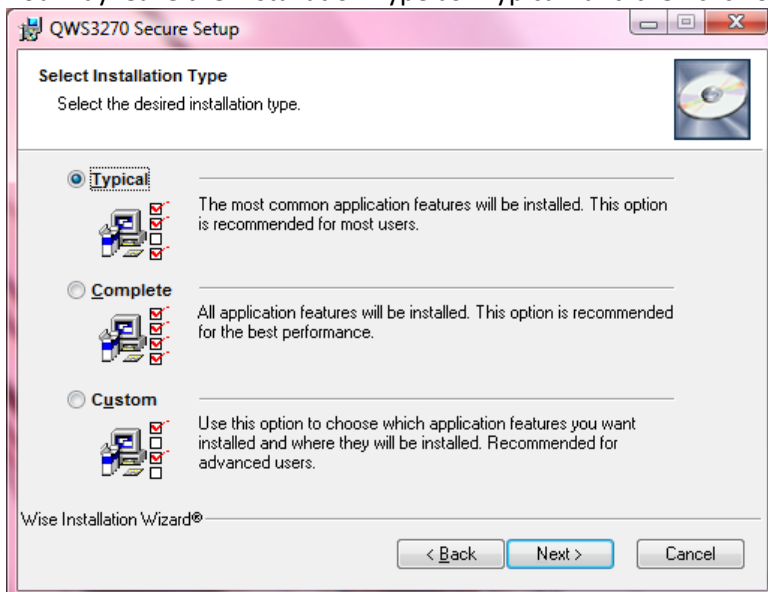
Click “I Agree” on the license agreement page and click on “Next.”

Fill in your Name and Organization fields if you wish and decide whether you want to limit the use of the software to just yourself or let anyone use the program (default) and click on “Next.”



The screenshot shows the 'User Information' step of the QWS3270 Secure Setup wizard. The window title is 'QWS3270 Secure Setup'. The main heading is 'User Information' with a sub-heading 'Enter the following information to personalize your installation.' There are two text input fields: 'Full Name:' containing 'User' and 'Organization:' containing 'WSU'. Below these fields is a paragraph of text: 'The settings for this application can be installed for the current user or for all users that share this computer. You must have administrator rights to install the settings for all users. Install this application for:'. There are two radio button options: 'Anyone who uses this computer' (which is selected) and 'Only for me (vinda)'. At the bottom, there are three buttons: '< Back', 'Next >', and 'Cancel'. The 'Wise Installation Wizard' logo is visible in the bottom left corner.

You may leave the Installation Type as “Typical” and then click on “Next.”



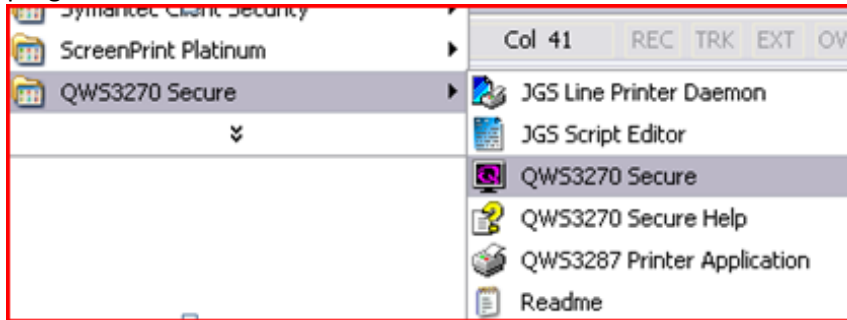
The screenshot shows the 'Select Installation Type' step of the QWS3270 Secure Setup wizard. The window title is 'QWS3270 Secure Setup'. The main heading is 'Select Installation Type' with a sub-heading 'Select the desired installation type.' There are three radio button options, each with a small icon of a computer and a list of features: 'Typical' (selected), 'Complete', and 'Custom'. The 'Typical' option has a description: 'The most common application features will be installed. This option is recommended for most users.' The 'Complete' option has a description: 'All application features will be installed. This option is recommended for the best performance.' The 'Custom' option has a description: 'Use this option to choose which application features you want installed and where they will be installed. Recommended for advanced users.' At the bottom, there are three buttons: '< Back', 'Next >', and 'Cancel'. The 'Wise Installation Wizard' logo is visible in the bottom left corner.

Accept the “English” User Interface Language and click on “Next.”

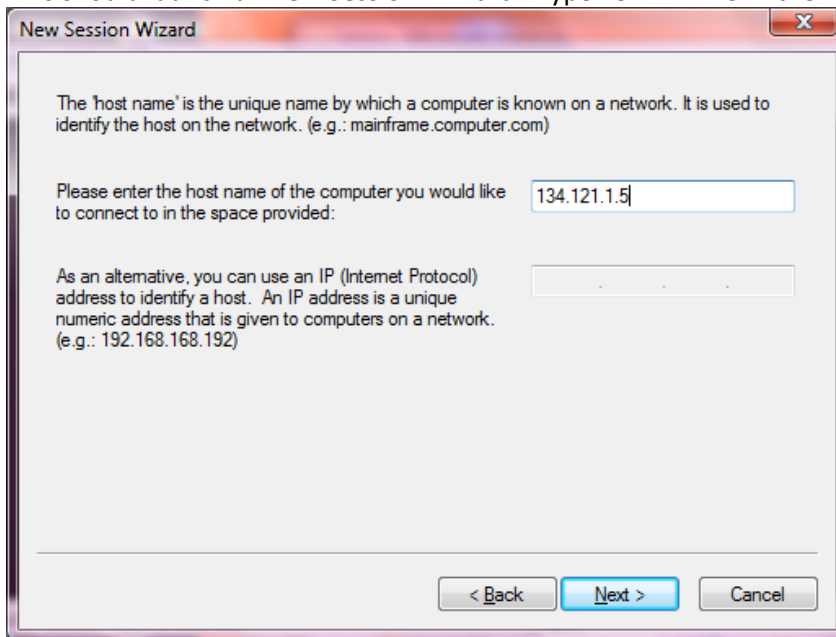
Click on “Next” at the Ready to Install screen.

Then on the final screen, click “Finish.”

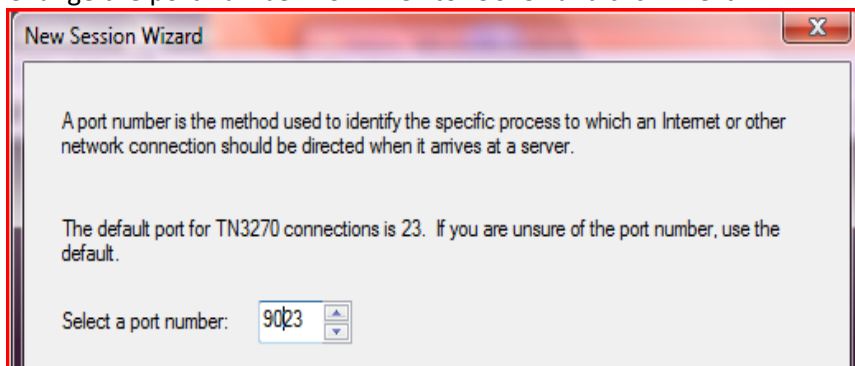
Now go to Start\Programs\QWS3270 Secure and click on the QWS3270 Secure icon to start the program.



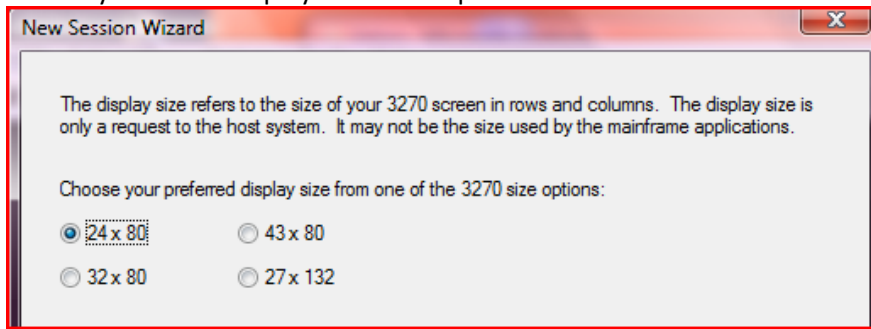
This should launch a “New Session” wizard. Type 134.121.1.5 in the “host name” line and click “Next.”



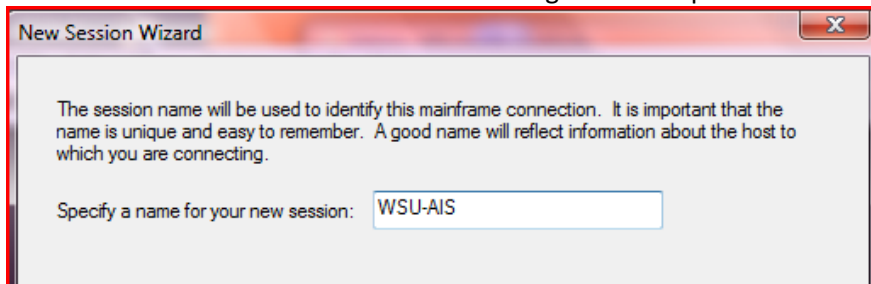
Change the port number from “23” to “9023” and click “Next.”



You may choose a display size or accept the default and then click “Next.”

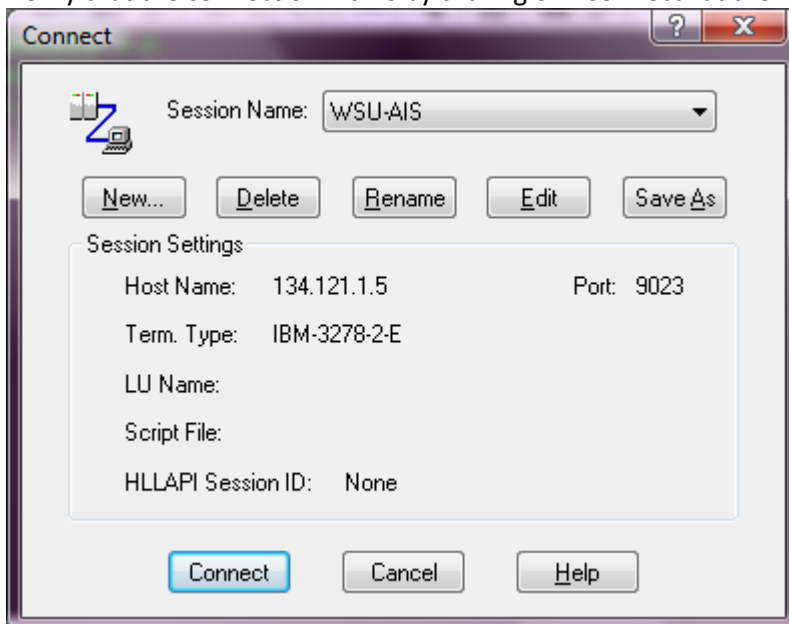


Fill in a name such as “WSU-AIS” or something else descriptive and click “Next.”



Then click “Finish.”

Verify that the connection works by clicking on “Connect” at the logon screen.



Each time you launch the application you will be presented with the Connect screen.

You can easily change the screen size by grabbing a corner or edge and dragging it to the dimension you want. Other settings such as color can be adjusted in the Edit/Options menu section.

